

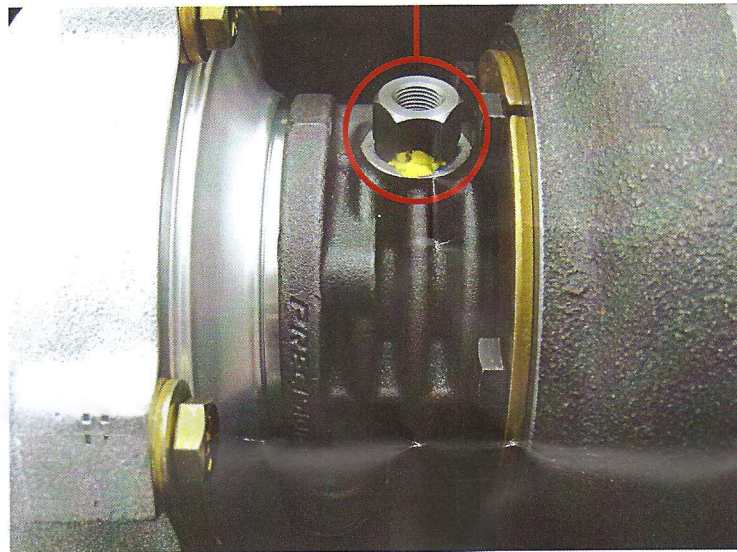
PRECISION

TURBO & ENGINE

Precision Turbo Dual Ceramic Ball Bearing Turbocharger

These units feature an air-cooled, ball bearing center housing rotating assembly. Dual, angular contact ceramic ball bearings are utilized for maximum durability and an increased thrust capacity. These units require the use of a 1/8" NPT male fitting on the oil feed side, which can be purchased separately from Precision Turbo (PFT047-3039). Most applications do not require the use of an oil feed restrictor fitting, however, on some applications it may be necessary. This fitting can be purchased separately from Precision Turbo (PTP074-2118). At the minimum, we recommend the use of a -10AN oil drain flange/line. This flange can be purchased separately from Precision Turbo (PTP074-2008). Water cooling is not required on these units.

*****This unit has been sealed for quality purposes. Do not remove the factory oil feed restrictor fitting, or damage may result*****



If you have questions about this, or any of our other products, please contact us directly at (219) 996-7832.

